



## Highcliffe School Student Bulletin

Monday 15<sup>th</sup> – Friday 19<sup>th</sup> January 2018: Week A

### General Notices

#### **World Book Day 2018 (MHY)**

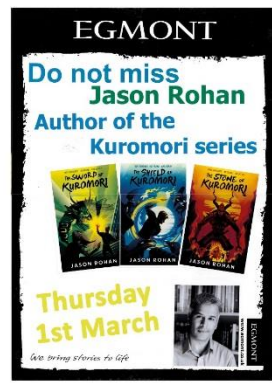
I am pleased to tell you Mr. James and I are organising our activities for World Book Day 2018.

On Thursday 1<sup>st</sup> March, we will be welcoming authors Jason Rohan and Julie Ratcliffe to the school. Jason & Julie will be running workshops for year 8 students, which will include scene setting, plot structure and character creation. Julie will also be returning on Friday 9<sup>th</sup> March to run further workshops.

Jason & Julie are looking forward to meeting as many students as possible and will be available to sign books in the library during break & lunchtime.

Books are now available to purchase via WisePay, and any purchased, will be signed for you by Jason or Julie. If you would like to see the books or for any further information, please see Ms. Haley in the library.

We are delighted to be able to run this event and hope to build on the success of last year!



#### **Head lice (KTN)**

Following a recent outbreak of head lice in school, we would ask you to please check your son/daughter and, if necessary, treat to prevent further cases.

#### **Are you in Year 9? Are you interested in participating in a Debate Club?**

If you are interested in discussing debating issues, arguing for a point of view, and challenging others' ideas, this could be the opportunity for you. If interested, please let me (Mr Bryden) know. You can come and see me in En1, or drop me an e-mail.

### **Lost Property (KTN)**

The following unnamed lost coats/jackets are in Student Support. If they are not collected by the end of January, they will be sent to the British Heart Foundation Charity shops. Thank you. Mrs Thompson

Girls black Pull & Bear leather small jacket, pattern on shoulder, no hood
Boys red Animal jacket large with hood
Boys No Gear black hooded coat, fleece inside Age 13
Boys Next blue and white marble affect fleece with hood Age 14
Girls Bay jacket black no hood, not waterproof, buttons on sleeves Size 8
Boys Mountain Warehouse dark blue with hood Age 13
Boys grey hoodie with zip, Primark, white inside 13-14
Girls black cardigan, black fur on shoulders F&F size 8
Boys blue Animal puffa jacket no hood Small
Girls New Look khaki parka with fur hood, leather pads on shoulders Age 14-15
Girls Next black bomber jacket, tiger print on the back, size 10
Girls Gold Digga thin, black hooded coat, badges on right arm size 12
Girls George khaki parka, fur trimmed hood Age 10-11
Girls Candy Couture blue parker, hooded no fur, size 10
Boys Primark grey hooded waterproof jacket, blue gloves in pocket Age 12-13
Boys black Lee Cooper puffa coat, Age 11-12
Boys black Adidas thin mac with hood, brown zip, size UK38/40
Boys Pepper blue zip up hoodie size 158/169
Girls Pink and grey Mountain Warehouse jacket size 10
Black coat labels says Ruiyige no size showing
Blue Regatta lightweight jacket size L
Girls Candy Couture blue with fur trimmed hood Age 11 – can read Jade but not the surname (no one has asked for it)
Girls George Khaki coat with fur lining and fur trimmed hood 8 – 9 yrs
Bright Pink Nike Mecurial football boots size 6

### **Our Japanese friends are coming ... (DBN)**

Would you like to make friends with someone from Japan? In March, Highcliffe School will once again be welcoming 14 Japanese boys from our partner school in Hiroshima. We are looking for 14 families to welcome and host them. It is a fantastic opportunity to really get to know someone from a different culture. Please note the following:

- The students are from a boys' school, but you do not have to be a boy to host. Plenty of female students have hosted!
- You are not expected to be able to speak any Japanese.
- Sixth Formers are welcome to host too!

Many families at our school have hosted over the year and had a really enjoyable and enriching experience as a result. They will be here from Thursday 15<sup>th</sup> March to Sunday 25<sup>th</sup> March (departing at 9am).

If interested, please let Mr Bryden know. You can send a message to the school office.

There are more details on the school website. See under Whole School Letters: Johoku Visit.

## Year 11 Science Booster sessions (RCN)

Date	Year 11 Open Session
January 17 <sup>th</sup> 2018 <b>WEDNESDAY</b>	Chemistry Sc8
January 24 <sup>th</sup> 2018 <b>WEDNESDAY</b>	Chemistry Sc8
January 31 <sup>st</sup> 2018 <b>WEDNESDAY</b>	Chemistry Sc8
February 7 <sup>th</sup> 2018 <b>WEDNESDAY</b>	Chemistry Sc8
<b>HALF TERM ALL FURTHER SESSIONS ON TUESDAY</b>	
February 20 <sup>th</sup> 2018	Physics Sc6
February 27 <sup>th</sup> 2018	Physics Sc6
March 6 <sup>th</sup> 2018	Physics Sc6
March 13 <sup>th</sup> 2018	Physics Sc6
March 20 <sup>th</sup> 2018	Physics Sc6
March 27 <sup>th</sup> 2018	Biology Sc4
<b>EASTER</b>	
April 17 <sup>th</sup> 2018	Biology Sc4
April 24 <sup>th</sup> 2018	Biology Sc4
May 1 <sup>st</sup> 2018	Biology Sc4
May 8 <sup>th</sup> 2018	Biology Sc4
May 15 <sup>th</sup> 2018	Skills Sc10
May 22 <sup>nd</sup> 2018	Skills Sc1
<b>HALF TERM</b>	

## Year 8 Critical Thinking Club (starting 17<sup>th</sup> Jan) (AAE/KWT)

When: Wednesday Lunchtime

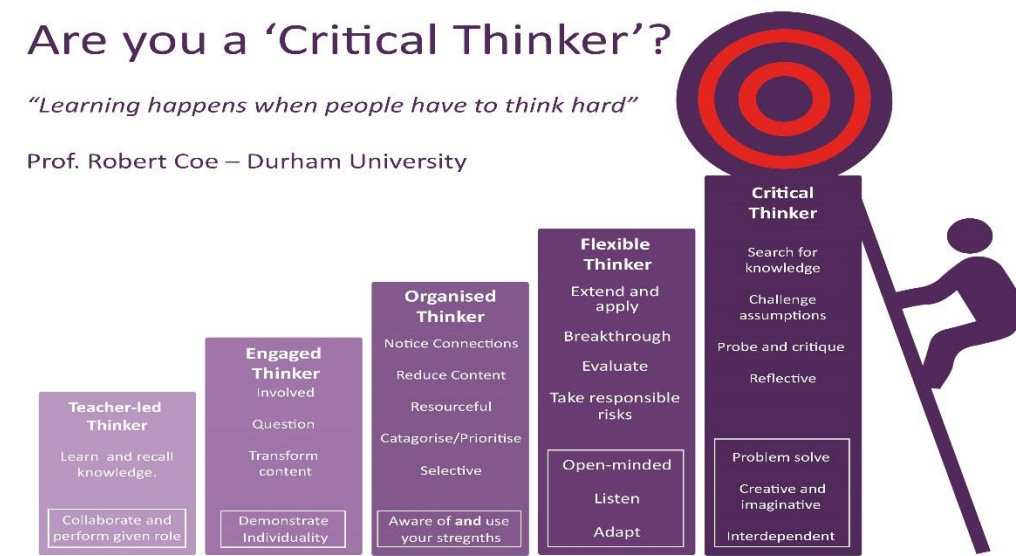
Where: SC6

Calling all Year 8's, Critical Thinking Club will begin Wednesday 17<sup>th</sup> January. Critical Thinking involves (among other things) probing, critiquing, advocating, connecting, challenging and taking risks. This year, we will be practising these skills as aspiring barristers and solicitors in a mock trial competition! If you fancy improving any of your critical thinking skills, please pop along to SC6 on Wednesday lunchtime to find out more.

## Are you a 'Critical Thinker'?

*"Learning happens when people have to think hard"*

Prof. Robert Coe – Durham University



## Music Notices

Day	Lunch	After school
Monday	Percussion Club EX3 All year welcome	
Tuesday	Highcliffe Choir and Choir Band EX2 All year welcome	Concert Band EX3 Grade 3+ on your instrument
Wednesday	Ukulele/Guitar EX2 All years welcome	Musical Theatre Choir EX1 All years welcome  Creative use of Music Technology EX5 All years welcome
Thursday	Senior Choir EX5 Audition Only Music Theory EX2 All years welcome	
Friday	Jamming Club EX2 All years welcome	

## PE Notices

<b>FIXTURES/PRACTICES 15<sup>th</sup> -19<sup>th</sup> January</b>		
	<b>LUNCHTIME (1.25-1.55pm)</b>	<b>AFTER SCHOOL (3.05-4.10pm)</b>
Monday	Year 7 basketball Club (NJS)	
Tuesday	Year 10 & 11 GCSE Netball Club (HWH/CFM)	<b>Year 9 rugby @ Ballard (NJS)</b> Table Tennis Club (3.05-4.30pm)
Wednesday	Year 8 Basketball Club (NJS)	<b>Year 8 Rugby @ Ballard (JDN)</b> <b>Year 7 &amp; 8 Girls Football @ Arnewood (CFM/HWH)</b> <b>Year 10 &amp; 11 Basketball v Ballard (A) (SHM)</b> Year 7-11 Netball Club (MWR & HWH)
Thursday		<b>Dorset Town Cross Country (LSN) 12.20pm</b> Year 7 Rugby Club (JDN) Year 7-9 Girls Football Club (CFM/HWH) Girls Rugby Club (WES)
Friday		

**The Best Words. In the Best Place.**

**This week's "Word of the Week" is ...**

**Meaningful**

What are you doing to improve your vocabulary?

**Meaningful** means ...

- 1/ having meaning
- 2/ serious, important, worthwhile
- 3/ communicating something that is not directly expressed e.g. She gave me a meaningful look.

**Examples:**

What are the most meaningful words in this poem?

That was a useful and meaningful conversation.

**What synonyms can you think of for the second definition?**

**Critical Thinking:**

Below is a recent headline using this week's word. What do you think Mark Zuckerberg means by "meaningful" in this context?

**"Facebook overhauls News Feed in favour of 'meaningful social interactions'"**

*What do you think of Zuckerberg's idea?*

*To what extent does social media affect our ability to have "meaningful social interactions"?*

**Commendation Opportunities:**

"Meaningful" is not a particularly difficult word – but do you use it? That is your challenge.

Try to use this word in class in writing or in speech. You might be commended for an effective use of it!

Break-through commendation: If you use it incorrectly first time, but try again, you might receive a break-through commendation!

**NEW Photography competition! - More info can be found on the website and on the door of AT5 or by asking Miss Eggleston.**

Introducing

# THE NATIONAL SCHOOL PHOTOGRAPHY

## AWARDS 2017/18

**Deadline: Weds 28th Feb 2018**

by **fse**design in partnership with  **Manfrotto**  
Imagine More

Could *you* be Britain's next TOP photographer?

**Prizes include:**

- Cameras & Accessories
- Photography day for your school
- Work Experience with Professional Photographers
- and more!

**Pick your category:**

- Post 16 - *School: A Lasting Impression*
- Secondary - *A Window into life at school*
- Primary - *School Spirit*

**Closing date for entries:** February 2018

**Winners announced:** March 2018

For more information on themes, judging & how to enter visit  
[www.fsedesign.co.uk/nspa](http://www.fsedesign.co.uk/nspa)

FSE is a specialist design agency supplying outstanding design and marketing services exclusively to the education sector.

**fse**design T: 01933 303520 E: [enquiries@fsedesign.co.uk](mailto:enquiries@fsedesign.co.uk) W: [www.fsedesign.co.uk/nspa](http://www.fsedesign.co.uk/nspa)





Married with three adult sons and three grandchildren, Julie Ratcliffe is an honours graduate of the Open University (1988). She studied British social history and literature from 16th to 19th centuries, including comparative work between Britain and Europe and Britain and America.

Julie has enjoyed writing from childhood. She began writing children's stories when working for Bolton Public Libraries, and often read her work to visiting school children. However, she never attempted to have the stories published. She continued to invent stories for her three boys, but it is only now that she has decided to publish her work.

Although born and raised in the north west of England, Julie has lived in Christchurch, Dorset since 1980. Here she has become fascinated with the history of this ancient town with its medieval relics, beautiful, cathedral-sized Priory Church, two rivers and quays. The town's development has been well-documented throughout the ages; Christchurch can trace its Mayors back to the 12th century.

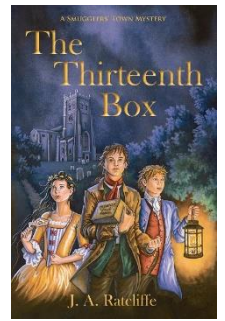
Julie is a member of the Society of Authors, the Society of Women Writers and Journalists, a member of the Christchurch History Society and she attends meetings of the Village Writers, who gather monthly in the New Forest.

### *The Thirteenth Box*

'Nearly everyone in Christchurch is a smuggler, or at least takes in the spoils,' Will Gibbs tells his new friend. 'But somethin' different's goin' on.'

It's March 1780. Smuggling along England's coast is rife, and dangerous ... Boxes holding parts of a mysterious machine have been smuggled into a small, south coast town and the chase is on to capture them, especially the all-important thirteenth box.

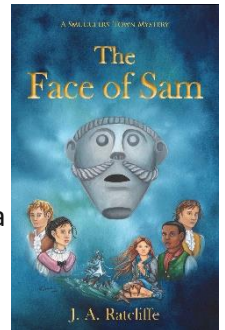
In this thrilling story of mystery and adventure, three young friends put themselves in great danger whilst trying to find out what's going on in their seemingly ordinary town. Who does the machine belong to? And amongst the strange characters they encounter, just who can they trust?



### *The Face of Sam*

Christchurch, Hampshire, 1781; a ship is wrecked during a violent storm. A young girl, found in the church staring at a face carved in the stone, refuses to talk. Perinne Menniere tries to befriend the girl, who is hiding a secret. Will Gibbs, back from America with a curious new friend, has something on his mind and Danny Clarke's life is about to take a sinister turn.

As word spreads about the wreck and the girl, strangers appear in town, including smugglers from Kent on a journey of revenge. All the talk is of a missing cipher that leads to a treasure trove and before long the friends are drawn together again in a mystery that can only be solved by *The Face of Sam*.



*The Thirteenth Box* and *The Face of Sam* are from the *Smugglers' Town Mysteries* series. Set in 18th-century England, they are action-packed and full of colourful characters. With a historically correct setting and using real places which families can still visit, they give a fascinating insight into life at the time.





## Calling All Artists

Would you like to have your work displayed for FREE in a main road location, where foot traffic quadruples during the summer months? This opportunity is not just for a day but for a whole year!

Too good to be true? We are also promising you sole use of a large Hall to host your own one man Art Exhibition for a whole weekend. This is surely an offer no artist can refuse.

If this would be of interest to you, then please read on.

The trustees of Stanpit Village Hall are holding an Art Competition to find an artist who can capture the unique beauty of our rich local environment. The artist is free to use any medium they wish including collage.

After the short listing process which will be held on Saturday June 30th, the final winner will be chosen by public vote at the MUDEFORD ARTS FESTIVAL which takes place on Mudeford Quay.

The winning entry will be photographed and this image will be transferred onto canvas. This canvas will then be displayed for a whole year in a specially designed showcase outside Stanpit Village Hall. The artist will be invited to provide a photograph of themselves, a short autobiography and their website details should they wish to sell further copies of their work.

Please visit our website, [www.stanpityillagehall.co.uk](http://www.stanpityillagehall.co.uk), where you will find full details.

Should you have any further questions please do not hesitate to contact Tracy Wright 07526 935311 or Aline Holdsworth 01202 986220

We look forward to seeing your entries.

Stanpit Village Hall Trustees

## Art Competition Guidelines

1. We request the size of the work to be 500mm x 400mm
2. The work should clearly epitomise the local environment
3. The work can be completed in any medium.
4. At this stage the artist should NOT sign their work
5. All entries should be delivered to Stanpit Village Hall on Saturday 30 June before noon, accompanied by a completed application form available to be downloaded from our website.
6. The Stanpit Village Hall committee will shortlist the entries.
7. The shortlisted entries will be notified on Saturday 30 June
8. All entries will be available for public viewing from 1.30 - 4.30pm at Stanpit Village Hall
9. All entries should be collected from the Hall by 5.00pm on Saturday 30 June
10. An A4 photograph will be taken of each shortlisted entry and these will be displayed in our notice board at the front of the Hall.
11. The short listed pictures will then be displayed in the main exhibition marquee at the Mudeford Arts Festival, where members of the public will be invited to vote for their favourite.  
There will be an opportunity for members of the public to contact the artist directly should they wish to purchase a canvas.
12. The winning picture will be photographed and the image transferred to canvas. This canvas will then be displayed for a year in the new showcase at the front of Stanpit Village Hall
13. The winning artist will be invited to use Stanpit Village Hall for a weekend to host his or her own exhibition.





*'We value the power of education to change lives.'*

## KEY DATES 2018-2019

### AUTUMN TERM

**MONDAY 3<sup>rd</sup> SEPTEMBER – FRIDAY 21<sup>st</sup> DECEMBER 2018**

**INSET DAY – Monday 3<sup>rd</sup> September**

**Tuesday 4<sup>th</sup> September – Y7 and Y12 ONLY**

**Wednesday 5<sup>th</sup> September – School open for ALL students (except Y13)**

**Thursday 6<sup>th</sup> September – School Open for ALL students (including Y13)**

**School Open Evening – Thursday 4<sup>th</sup> October (school closes 2pm)**

**Sixth Form Open Evening – Thursday 11<sup>th</sup> October (school closes at 2pm)**

**HALF TERM HOLIDAY Monday 22<sup>nd</sup> October – Friday 26<sup>th</sup> October 2018**

(school closes 3.05pm Friday 19<sup>th</sup> October)

**6<sup>th</sup> Form Taster Day (for Y11) Friday 9<sup>th</sup> November – school closed for Y7-10**

**CHRISTMAS HOLIDAY Monday 24<sup>th</sup> December 2018 – Friday 4<sup>th</sup> January 2019**

(school closes 12.20pm Friday 21<sup>st</sup> December)

### SPRING TERM

**MONDAY 7<sup>th</sup> JANUARY – FRIDAY 5<sup>th</sup> APRIL 2019**

**INSET DAY - Friday 1<sup>st</sup> February**

**HALF TERM HOLIDAY Monday 18<sup>th</sup> – Friday 22<sup>nd</sup> February inclusive**

(school closes 3.05pm Friday 15<sup>th</sup> February)

**EASTER HOLIDAY Monday 8<sup>th</sup> April – Monday 22<sup>nd</sup> April inclusive**

(school closes 12.20pm Friday 5<sup>th</sup> April)

### SUMMER TERM

**TUESDAY 23<sup>rd</sup> APRIL – FRIDAY 19<sup>th</sup> JULY 2019**

**May Day Bank Holiday – Monday 6<sup>th</sup> May**

**HALF TERM HOLIDAY Monday 27<sup>th</sup> May – Friday 31<sup>st</sup> May inclusive**

(school closes 3.05pm Friday 24<sup>th</sup> May)

**INSET DAY - Monday 24<sup>th</sup> June**

**School closes 12.20pm Friday 19<sup>th</sup> July 2019**

**INSET DAYS - Monday 3<sup>rd</sup> September, Friday 1st February, Monday 24<sup>th</sup> June**